

ARTIST SERIES:
ROHIN BHALLA

Oaxaca





Oaxaca

is a place where tradition persists,
to the delight of anyone who visits.
These new designs want to capture
this timelessness, imagining what might
have inspired the marvelous artisans
that lived here hundreds of years ago.



Penacho

CLAY TILE



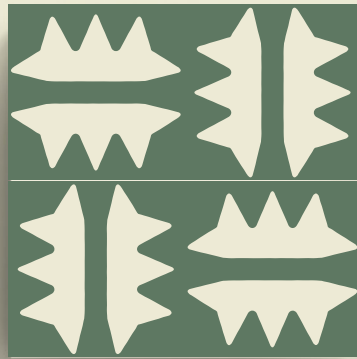
8" X 8"

3/8" THICK

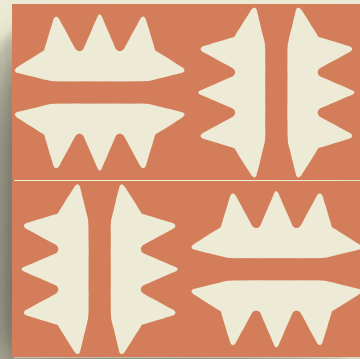
MATTE FINISH

Penacho

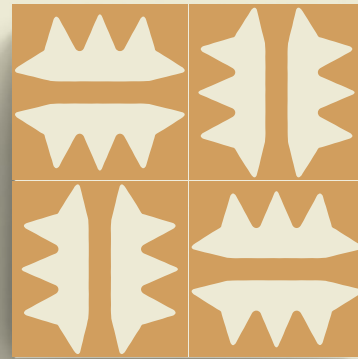
TORTUGA



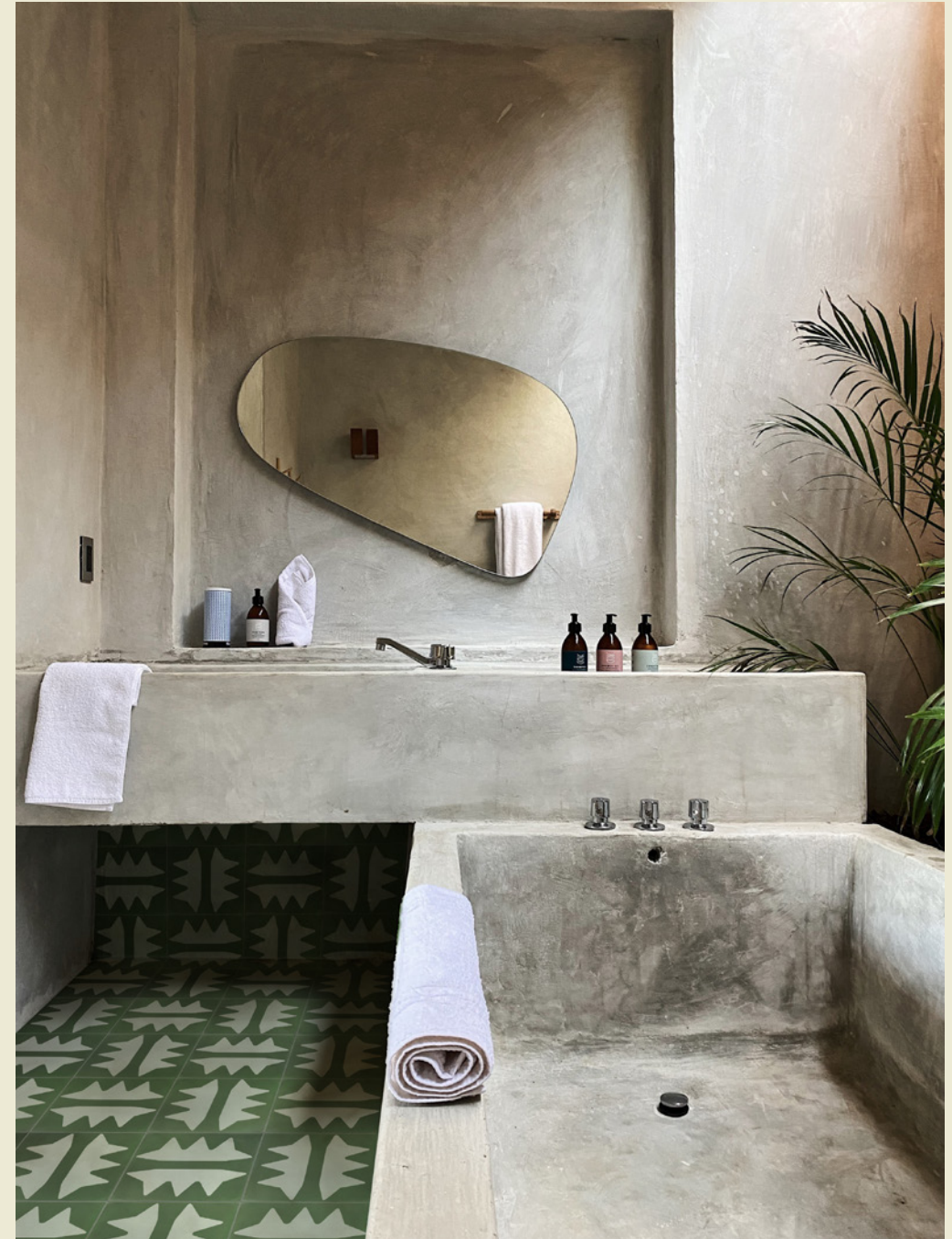
MICHELADA

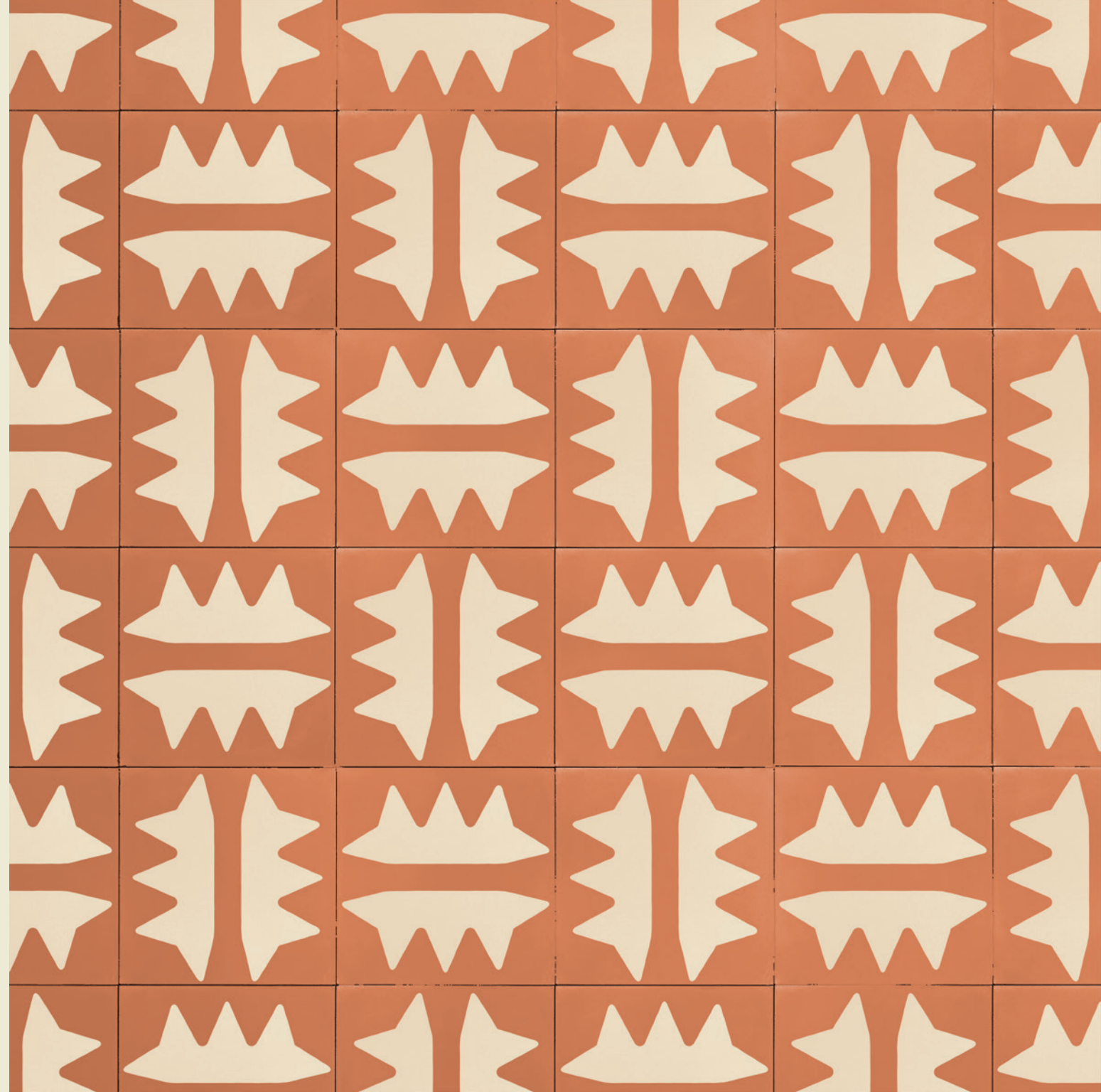


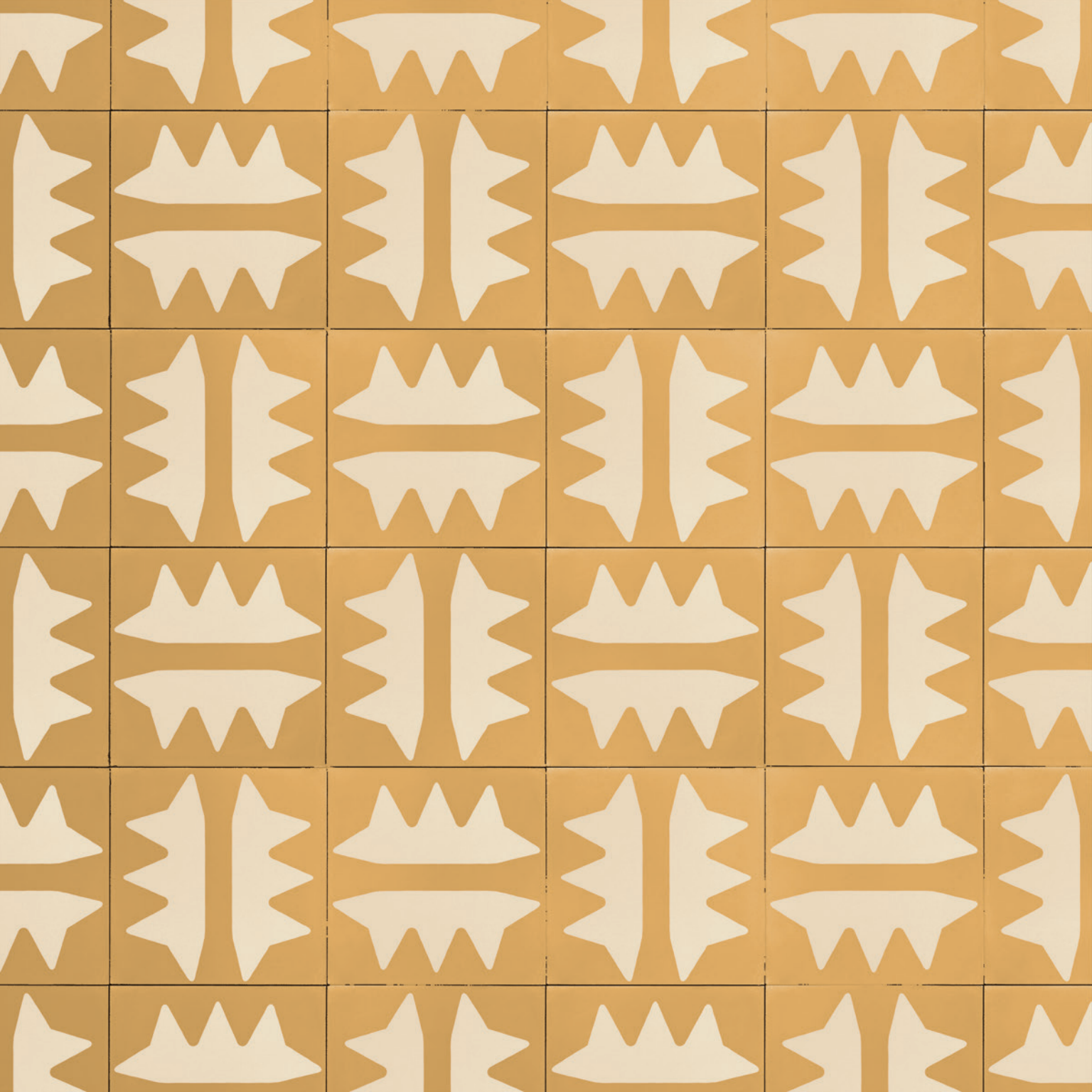
TOPAZ



49 | LIGHT ALMOND GROUT









Penacho

Named after the vibrant headdress of Moctezuma, Aztec emperor at the time Spain invaded Mexico, Penacho is a symbol of the juxtaposition of the indigenous and the colonist.

This mix of culture is what one sees when they experience Oaxaca.



Etla

CLAY TILE

8" X 8"



3/8" THICK

MATTE FINISH

Etla

AURORA / CHAMPAGNE



CHAMPAGNE / AURORA



49 LIGHT ALMOND GROUT

OR

09 GRAY GROUT



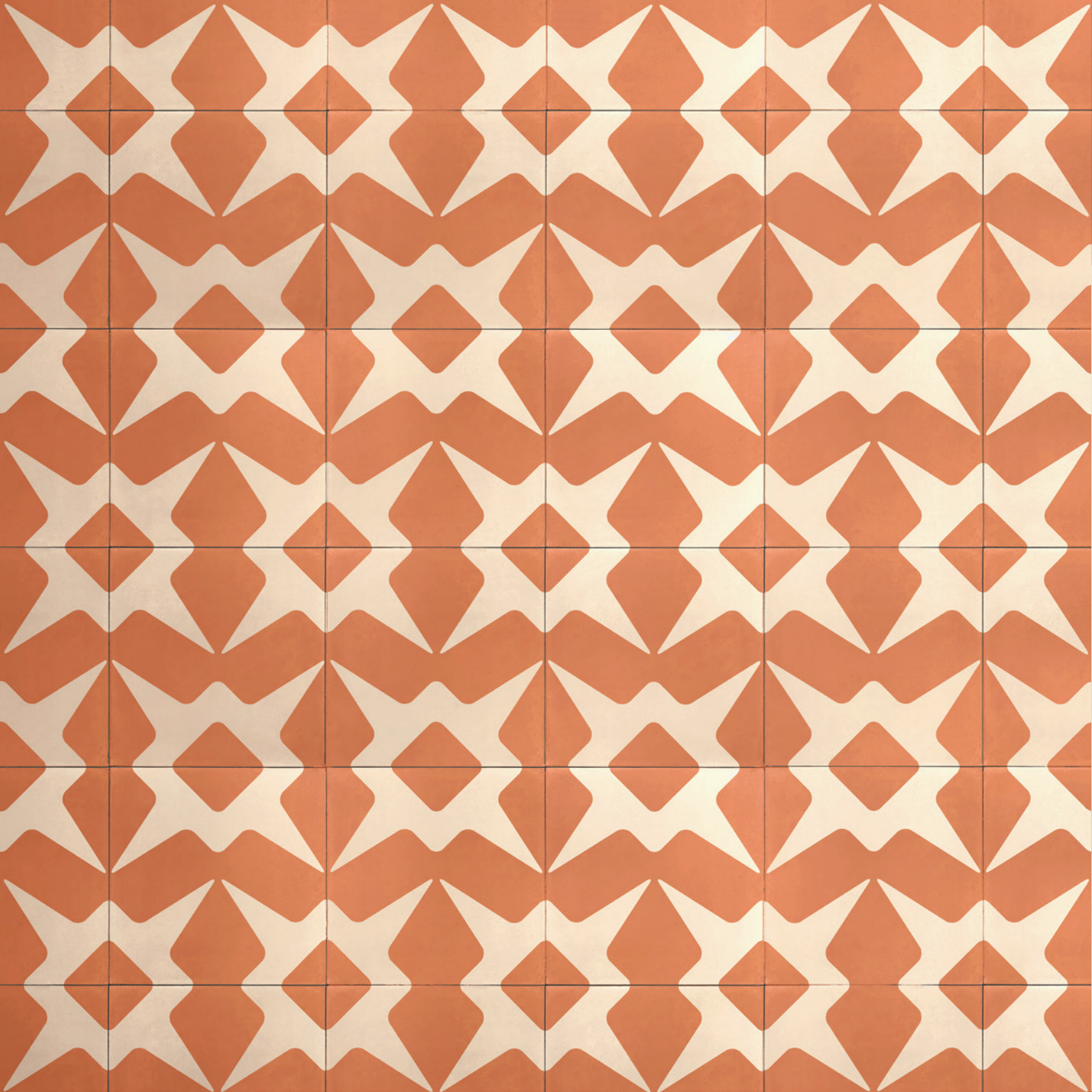




Etla

is a place that's not in a hurry.

Named after the area of Oaxaca where the story of this collection began, this pattern wants to illustrate the calm flow that's always present around us.



Xochitl

CLAY TILE



8" X 8"

3/8" THICK

MATTE FINISH

Xochitl

MICHELADA



TORTUGA



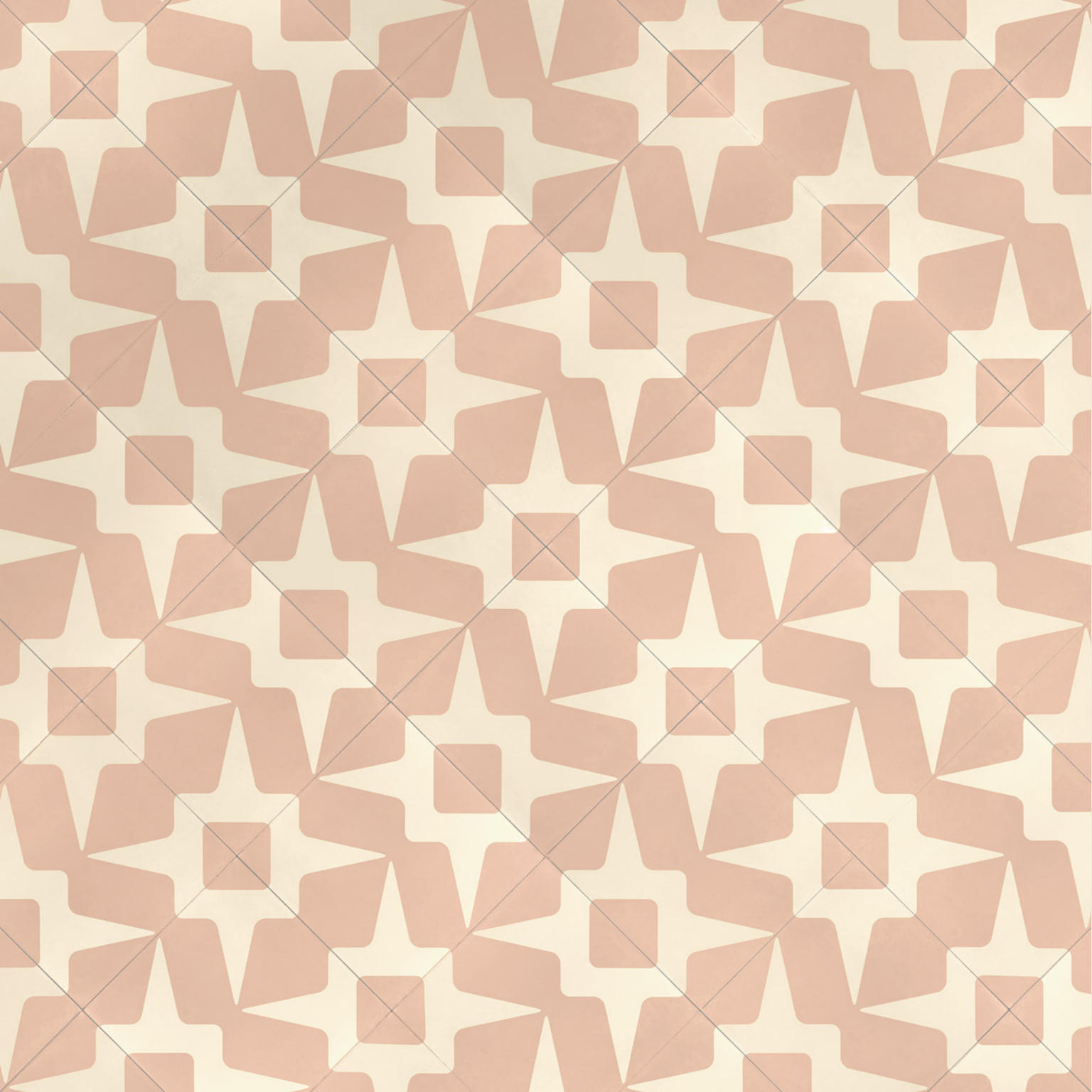
QUARTZ



49 LIGHT ALMOND GROUT









Xochitl

A beautiful nahuatl word for 'flower', Xochitl is a tribute to the fascinating fauna of southern Mexico.

This design lets us enter the unique expression of natural beauty in Oaxaca and plants a field of stars across your tiles.



Specs

SIZE:	8" X 8"
MATERIAL:	CLAY
THICKNESS:	3/8" THICK
FINISH:	MATTE
TEXTURE:	SMOOTH
1 SQ.FT:	2.25 PIECES
GROUT (PENACHO & XOCHITL):	49 LIGHT ALMOND
GROUT (ETLA):	49 LIGHT ALMOND -OR- 09 GRAY
VARIATION:	V2 (SLIGHT VARIATION)
WATER ABSORPTION:	3% < 7%
SCRATCH HARDNESS:	MOHS 5
COEFFICIENT OF FRICTION (COF):	≤ .5

Usage

RECOMMENDED

- Interior floors, walls, mudrooms, kitchen islands, entryways, backsplashes, fireplace surrounds, showers, steam rooms, decorative walls and bathroom floors
- Commercial and high traffic areas such as restaurants, bars and offices
- Stair risers
- Some outdoor applications, such as, patio floors under a covered area. Outdoor kitchens and showers in warmer climates and most areas not directly exposed to freezing conditions

AVOID

- × Areas exposed to freezing conditions, sloped floors in wet areas, stair treads and commercial kitchens



THE ARTIST:



Rohin is a designer from Austin who invents all types of objects. He received his degree from Elisava in Barcelona and his work has been exhibited at the Salone del Mobile during Milan Design Week and at the Museo Franz Mayer in Mexico City.

While working in Mexico, he became fascinated with how simple shapes of wood could be rotated and intersected together to create a piece of furniture. He couldn't help but use the same approach when creating this collection.

@ro_hin



CLAY-ATK

CLAY  IMPORTS

Handcrafted Tile

x ROHIN

OAXACA SERIES 2023

Rohin